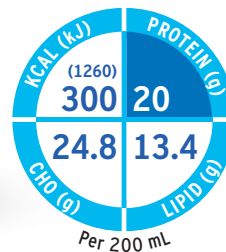




**FRESENIUS
KABI**

caring for life



Fresubin® Protein Energy DRINK

The Power of Protein

1.5 kcal/mL oral nutritional supplement for the dietary management of patients with or at risk of malnutrition, in particular with increased energy and protein needs and/or fluid restrictions

High protein content (27% Energy) - 20g/bottle contributes to clinical and functional benefits¹

With all micro- and macronutrients for complete nutrition¹

Variety of flavours to support compliance²

For Health Care Professionals only.

Fresubin

Protein Energy DRINK

Available in three delicious flavours
in 200 mL EasyBottle



Nutritional Information

Average content		100 mL	bottle = 200 mL
Energy value			
	kJ	630	1260
	(kcal)	(150)	(300)
Fat (40% Energy)	g	6.7	6.8
of which SFA	g	0.6	1.2
of which MUFA	g	4.9	9.8
of which PUFA	g	1.2	2.4
of which cholesterol	mg	≤ 7	≤ 14
Carbohydrate (33% Energy)	g	12.4 ^{a,c} /12.1 ^b	24.8 ^{a,c} /24.2 ^b
of which sugars	g	7.1 ^a /7.4 ^a /6.5 ^c	14.2 ^a /14.8 ^a /13 ^c
of which lactose	g	≤ 0.4	≤ 0.8
Fibre (0.7% Energy)^b	g	0 ^{a,c} /0.5 ^b	0 ^{a,c} /0.10 ^b
Protein (27% Energy)	g	10	20
Salt (Na x 2.5)	g	0.13 ^{a,c} /0.15 ^b	0.26 ^{a,c} /0.30 ^b
Water	mL	79	158
Lactose Content	g	≤ 0.4	≤ 0.8
Gluten Content	ppm	≤ 5	≤ 5
Osmolarity	mosmol/l	380 ^{a,c} /390 ^b	380 ^{a,c} /390 ^b
Osmolality	mosmol/kg H ₂ O	500 ^{a,c} /510 ^b	500 ^{a,c} /510 ^b
Minerals and trace elements			
Sodium	mg	50 ^{a,c} /60 ^b	100 ^{a,c} /120 ^b
Potassium	mg	130 ^{a,c} /135 ^b	260 ^{a,c} /270 ^b
Chloride	mg	73 ^{a,c} /58 ^b	146 ^{a,c} /116 ^b
Calcium	mg	205	410
Magnesium	mg	28 ^{a,c} /18 ^b	56 ^{a,c} /36 ^b
Phosphorus	mg	120	240
Iron	mg	2.5	5.0
Zinc	mg	2.0	4.0
Copper	µg	375	750
Manganese	mg	0.5	1.0
Iodine	µg	37.5	75
Fluoride	mg	0.25	0.50
Chromium	µg	12.5	25
Molybdenum	µg	18.8	37.6
Selenium	µg	13.5	27
Vitamins			
Vitamin A	µg RE ^o	213	426
of which β-Carotene	µg RE ^o	63	126
Vitamin D ₃	µg	2.5	5.0
Vitamin E	mg α-TE ^{oo}	3.75	7.5
Vitamin K ₁	µg	21	42
Thiamin (vitamin B ₁)	mg	0.3	0.6
Riboflavin (vitamin B ₂)	mg	0.4	0.8
Niacin	mg/mg NE ^{ooo}	1.5/3.18	3.0/6.36
Vitamin B ₆	mg	0.43	0.86
Vitamin B ₁₂	µg	0.75	1.5
Pantothenic acid	mg	1.5	3.0
Biotin	µg	9.4	18.8
Folic acid	µg	62.5	125
Vitamin C	mg	18.8	37.6

a) Vanilla b) Chocolate c) Cappuccino
^oRE: retinol equivalents; ^{oo}α-TE: alpha-tocopherol equivalents;
^{ooo}NE: niacin equivalents

Prescribing information

Food for special medical purposes:

High protein, high energy 1.5 kcal/mL supplement, Low in lactose and gluten. For the dietary management of patients with or at risk of disease related malnutrition in particular with increased protein and energy needs or fluid restrictions.

Cappuccino only: Contains traces of caffeine (0.5mg/100mL)

Dosage:

To be determined by a health care professional according to patients' needs. Recommendation for supplementary nutrition 2-3 bottles (600-900 kcal)/day or complete nutrition 4-5 bottles (1200-1500 kcal)/day.

Important notes:

To be used under medical supervision. Suitable as sole source of nutrition. If used for complete nutrition consider high protein level. Not suitable for children < 3 years. Use with caution in children < 6 years. Not suitable for patients with galactosaemia. Ensure adequate fluid and electrolyte intake.

Not for parenteral (I.V.) use!

Instruction for use:

Store at room temperature. Opened bottles may be stored in a refrigerator for up to 24 hours. Shake well before use. Drink slowly! Best served chilled.

Contraindications:

Not suitable whenever enteral nutrition is not permitted such as in acute gastrointestinal bleeding, ileus and shock. Use with caution in severe organ failure with impaired metabolism and severe forms of malabsorption. Not suitable for patients with congenital inability to metabolise nutrients contained in Fresubin Protein Energy DRINK.

Ingredients

Water, milk protein, sucrose, vegetable oils (rapeseed oil, sunflower oil), maltodextrin, fat reduced cocoa powder^a, minerals, flavourings, emulsifiers (soya lecithin, E 471), vitamins, stabilisers (E 460, E 466, E 407)^b, acidity regulator (E 524)^b, trace elements.

Allergen Information: This product contains milk and soy.

Flavours

Vanilla, Chocolate, Cappuccino

References

- 1) World Health Organization. Protein and amino acid requirements in human nutrition. WHO technical report series 2007; 935.
- 2) Hubbard GP, Elia M, Holdaway A, Stratton RJ: A systematic review of compliance to oral nutritional supplements. Clin Nutr 2012, 31:293-312.