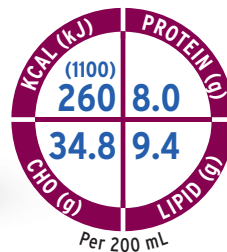




**FRESENIUS  
KABI**

caring for life



# Fresubin<sup>®</sup> Hepa DRINK

Tailored for hepatic patients

1.3 kcal/mL oral nutritional supplement for the dietary management of patients with or at risk of malnutrition, in particular liver failure or with risk of hepatic encephalopathy

44% branched chain amino acids to counteract hepatic encephalopathy and to improve nutritional status<sup>1-4</sup>

Low in volume and sodium<sup>5</sup> to counteract ascites and oedema<sup>6</sup>

With medium chain triglycerides (MCT) (35% of fat) for easy absorption<sup>7</sup>

With fibre to maintain gut physiology<sup>8</sup>

For Health Care Professionals only.

# Fresubin Hepa DRINK

Available in Cappuccino flavour  
in 200 mL EasyBottle



## Nutritional Information

Average content		100 mL	bottle = 200 mL
<b>Energy value</b>	kJ (kcal)	550 (130)	1100 (260)
<b>Fat (33% Energy)</b>	g	4.7	9.4
of which saturated fatty acids	g	2.0	4.0
of which medium chain triglycerides (MCT)	g	1.7	3.4
of which monounsaturated fatty acids	g	1.4	2.8
of which polyunsaturated fatty acids	g	1.3	2.6
<b>Carbohydrate (53.5% Energy)</b>	g	17.4	34.8
of which sugars	g	0.7	1.4
of which lactose	g	≤ 0.01	≤ 0.02
<b>Fibre (1.5% Energy)</b>	g	1.0	2.0
<b>Protein (12% Energy)</b>	g	4.0	8.0
of which branched amino acids 44%	g	1.93	3.86
<b>Salt (Na x 2.5)</b>	g	0.19	0.38
<b>Water</b>	mL	78	156
<b>Lactose Content</b>	g	≤ 0.1	≤ 0.2
<b>Gluten Content</b>	ppm	≤ 20	≤ 20
<b>Osmolarity</b>	mosmol/l	360	
<b>Minerals and trace elements</b>			
Sodium	mg	75	150
Chloride	mg	71.5	143
Potassium	mg	120	240
Calcium	mg	80	160
Phosphorus	mg	53	106
Magnesium	mg	27	54
Iron	mg	1.33	2.66
Zinc	mg	1.2	2.4
Copper	µg	130	260
Iodine	µg	13.3	26.6
Selenium	µg	6.67	13.34
Manganese	mg	0.27	0.54
Chromium	µg	6.67	13.34
Molybdenum	µg	10	20
Fluoride	mg	0.13	0.26
<b>Vitamins and other<sup>a</sup> substances</b>			
Vitamin A	µg RE <sup>o</sup>	92	184
of which β-Carotene	µg RE <sup>o</sup>	22	44
Vitamin D <sub>3</sub>	µg	1.0	2.0
Vitamin E	mg α-TE <sup>oo</sup>	1.33	2.66
Vitamin K <sub>1</sub>	µg	6.67	13.34
Vitamin C	mg	6.67	13.34
Thiamin (vitamin B <sub>1</sub> )	mg	0.13	0.26
Riboflavin (vitamin B <sub>2</sub> )	mg	0.17	0.34
Vitamin B <sub>6</sub>	mg	0.16	0.32
Niacin	mg/mg NE <sup>ooo</sup>	1.6/2.3	3.2/4.6
Folic Acid	µg	27	54
Vitamin B <sub>12</sub>	µg	0.27	0.54
Pantothenic Acid	mg	0.47	0.94
Biotin	µg	5.0	10.0
Choline <sup>a</sup>	mg	28	56
Caffeine <sup>a</sup>	mg	4.0	8.0

<sup>o</sup> retinol equivalents (RE), <sup>oo</sup> alpha-tocopherol equivalents (α-TE), <sup>ooo</sup> niacin equivalents (NE)

## Prescribing Information

### Food for special medical purposes:

Nutritionally complete, high caloric (1.3 kcal/mL) oral nutritional supplement with fibre; increased in branched chain amino acids, with medium chain triglycerides (MCT). Low in lactose and gluten, with sweeteners. Caffeine content 4.0 mg/100 mL. For the dietary management of patients with or at risk of disease-related malnutrition in particular with acute and chronic liver failure.

### Dosage:

To be determined by a health care professional according to patients' needs. Recommendation for supplementary nutrition 2-3 bottles/day (520-780 kcal) or complete nutrition 7-8 bottles/day (1820-2080 kcal).

### Important notes:

To be used under medical supervision. Suitable as sole source of nutrition. Not suitable for children < 3 years. Use with caution in children < 6 years. Not suitable for patients with galactosaemia. Ensure adequate fluid intake.

### Not for parenteral (I.V.) use!

### Instruction for use:

Store at room temperature. Opened bottles may be stored in a refrigerator for up to 24 hours. Best served chilled. Shake well before use. Drink slowly! Packaged in a protective atmosphere.

### Contraindications:

Not suitable whenever enteral nutrition is not permitted such as in acute gastrointestinal bleeding, ileus and shock. Use with caution in severe organ failure with impaired metabolism and severe forms of malabsorption. Not suitable for patients with congenital inability to metabolise nutrients contained in Fresubin Hepa DRINK.

## Ingredients

Water, maltodextrin, vegetable oils (rapeseed oil, soya oil), medium chain triglycerides (MCT), soya protein, soya polysaccharides, milk protein, l-leucine, flavourings (with maltodextrin from wheat), l-valine, l-arginine hydrochloride, potassium citrate, l-isoleucine, calcium phosphate, sodium citrate, magnesium citrate, sweeteners (sodium cyclamate, sodium saccharin), choline chloride, vit. C, acidity regulator (E 330), magnesium oxide, calcium carbonate, iron sulphate, thickener (E 407), zinc sulphate, niacin, vit. E, manganese chloride, pantothenic acid, sodium fluoride, vit. B<sub>2</sub>, vit. B<sub>6</sub>, copper sulphate, vit. B<sub>1</sub>, vit. A, β-carotene, folic acid, chromium chloride, sodium molybdate, potassium iodide, sodium selenite, biotin, vit. K<sub>1</sub>, vit. D<sub>3</sub>, vit. B<sub>12</sub>. **Allergen Information: This product contains soy, milk and wheat.**

## Flavour

Cappuccino

## References

- Plauth M, Cabre E, Riggio O, et al. ESPEN guidelines on enteral nutrition: liver disease. Clin Nutr. 2006; 25(2): 285-294.
- Amodio P, Bemeur C, Butterworth R, et al. The Nutritional Management of Hepatic Encephalopathy in Patients With Cirrhosis: International Society for Hepatic Encephalopathy and Nitrogen Metabolism Consensus. Hepatology. 2013; 58(1): 325-336.
- Glud LL, Dam G, Les I, et al. Branched-chain amino acids for people with hepatic encephalopathy. Cochrane Library. 2007. CD001939
- Kawaguchi T, Taniguchi E, Sata M. Effects of oral branched-chain amino acids on hepatic encephalopathy and outcome in patients with liver cirrhosis. Nutrition in Clinical Practice. 2013; 28(5) 580-588.
- Ginés P, Angeli P, Lenz K, et al. European Association for the Study of the Liver. EASL clinical practice guidelines on the management of ascites, spontaneous bacterial peritonitis, and hepatorenal syndrome in cirrhosis. J Hepatol. 2010; 53(3): 397-417.
- Runyon BA. Management of adult patients with ascites due to cirrhosis: an update. Hepatology. 2009; 49(6): 2087-2107.
- Babayán VK. Medium chain triglycerides and structured lipids. Lipids. 1987; 22(6): 417-420.
- Lochs H, Allison SP, Meier R, et al. Introductory to the ESPEN Guidelines on Enteral Nutrition: terminology, definitions and general topics. Clin Nutr. 2006; 25(2): 180-186.



**FRESENIUS  
KABI**

caring for life

Fresenius Kabi Australia Pty Limited  
Level 2, 2 Woodland Way,  
Mount Kuring-gai NSW 2080  
Phone 1300 732 001  
Fax 1300 304 384  
www.fresenius-kabi.com.au

Fresenius Kabi New Zealand Limited  
60 Pavilion Drive, Māngere  
Auckland 2022 New Zealand  
Phone 0800 144 892  
Fax +64 9925 2721  
PM2019.538V1 Pub: October 2019