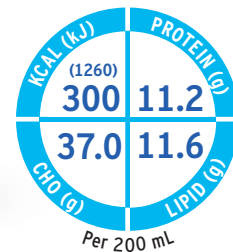




**FRESENIUS
KABI**

caring for life



Fresubin® Energy DRINK

Extra energy with plenty of choices

1.5 kcal/mL oral nutritional supplement for the dietary management of patients with or at risk of malnutrition, in particular with increased energy needs and/or fluid restrictions

With high quality protein for a balanced amino acid provision¹

With all micro- and macronutrients for complete nutrition

Fibre free for patients who cannot tolerate fibre²

With a broad range of flavours to support better compliance³

For Health Care Professionals only.

Fresubin® Energy DRINK

Available in four delicious flavours
in 200 mL EasyBottle



Nutritional Information

Average content	Fresubin Energy DRINK	
	100 mL	bottle = 200 mL
Energy value	kJ (kcal)	630 1260 (150) (300)
Fat (35% Energy)	g	5.8 11.6
of which SFA*	g	0.4/0.5 ^a 0.8/1.0 ^a
of which MUFA**	g	3.8/3.7 ^a 7.6/7.4 ^a
of which PUFA***	g	1.6 3.2
Carbohydrate (50% Energy)	g	18.8/18.5 ^a 37.6/37.0 ^a
of which sugars	g	3.9 - 6.3 7.8 - 12.6
of which lactose	g	≤ 0.27 ≤ 0.54
Fibre	g	0/0.5 ^a 0/1.0 ^a
Protein (15% Energy)	g	5.6 11.2
Salt (Na x 2.5)	g	0.2/0.21 ^a 0.4/0.42 ^a
Water	ml	78 156
Lactose Content	g	≤ 0.27 ≤ 0.54
Gluten Content	ppm	≤ 5
Osmolarity	mosmol/L	355 - 405
Osmolality	mosmol/kg H ₂ O	460 - 530
Minerals and trace elements		
Sodium	mg	80/85 ^a 160/170 ^a
Potassium	mg	135/140 ^a 270/280 ^a
Chloride	mg	100 200
Calcium	mg	135/130 ^a 270/260 ^a
Magnesium	mg	21/24 ^a 42/48 ^a
Phosphorus	mg	80/85 ^a 160/170 ^a
Iron	mg	2.0 4.0
Zinc	mg	1.5 3.0
Copper	µg	300 600
Manganese	mg	0.4 0.8
Iodine	µg	30 60
Fluoride	mg	0.2 0.4
Chromium	µg	10 20
Molybdenum	µg	15 30
Selenium	µg	10 20
Vitamins and other nutrients[†]		
Vitamin A	µg RE ^o	120 240
β-Carotene	µg	300 600
Vitamin D ₃	µg	2.0 4.0
Vitamin E	mg α-TE ^{oo}	3.0 6.0
Vitamin K ₁	µg	16.7 33.4
Vitamin B ₁	mg	0.23 0.46
Vitamin B ₂	mg	0.32 0.64
Niacin	mg NE ^{ooo}	3.0 6.0
Vitamin B ₆	mg	0.33 0.66
Vitamin B ₁₂	µg	0.6 1.2
Pantothenic acid	mg	1.2 2.4
Biotin	µg	7.5 15.0
Folic acid	µg	50 100
Vitamin C	mg	15 30
Choline [†]	mg	26.7 53.4

a) Chocolate Flavour *saturated fatty acids (SFA),
monounsaturated fatty acids (MUFA), *polyunsaturated fatty acids (PUFA)
^oretinol equivalents (RE), ^{oo}alpha-tocopherol equivalents (α-TE), ^{ooo}niacin equivalents (NE)

Prescribing information

Food for special medical purposes:

Nutritionally complete, high-caloric (1.5 kcal/mL) oral nutritional supplement. Fresubin Energy is fibre free[^]. Low in lactose and gluten.

For the dietary management of patients with or at risk of disease related malnutrition in particular for patients with increased energy needs and/or fluid restrictions.

Dosage:

To be determined by a health care professional according to patients' needs. Recommendation for supplementary nutrition 2 - 3 bottles (600 - 900 kcal) / day or complete nutrition 5 - 7 bottles (1500 - 2100 kcal) / day.

Important notes:

To be used under medical supervision. Suitable as sole source of nutrition. Not suitable for infants < 3 years. Use with caution in children < 6 years. Not suitable for patients with galactosaemia. Ensure adequate fluid intake.

Not for parenteral (I.V.) use!

Instruction for use:

Store at room temperature. Opened bottles may be stored in a refrigerator for up to 24 hours. Drink slowly! Best served chilled. Packaged in a protective atmosphere.

Contraindications:

Not suitable whenever enteral nutrition is not permitted such as in acute gastrointestinal bleeding, ileus and shock. Use with caution in severe organ failure with impaired metabolism and severe forms of malassimilation. Not suitable for patients with congenital inability to metabolise nutrients contained in Fresubin Energy DRINK.

[^]Flavour Chocolate contains traces of fibre from cocoa powder

Ingredients

Fresubin Energy all flavours: Water, maltodextrin, milk protein, vegetable oils (rapeseed oil, sunflower oil), sucrose, fat reduced cocoa powder[†], flavourings, sodium citrate, emulsifiers (E 471, soya lecithin), stabilisers (E 460, E 466, E 407; sodium chloride, potassium chloride, potassium citrate^o, vit. C, choline chloride, magnesium oxide, acidity regulator (E 330)^o, iron pyrophosphate^o, zinc sulphate, niacin, vit. E, pantothenic acid, manganese chloride, copper sulphate, vit. B₆, vit. B₂, sodium fluoride, β-carotene, vit. B₁, vit. A, folic acid, chromium chloride^o, sodium molybdate, vit. K₁, potassium iodide, sodium selenite, biotin, vit. D₃, vit. B₁₂.

Allergen Information: This product contains milk and soy.

^oamount/position depending on flavour, ^oonly present in the flavour "Chocolate", ^onot present in the flavour "Chocolate"

Flavours

Fresubin Energy: Vanilla, Chocolate, Cappuccino^{^^}, Neutral

^{^^} Flavour Cappuccino contains traces of caffeine (0.4 mg/100 mL)

References

- 1) World Health Organization. Protein and amino acid requirements in human nutrition. WHO technical report series 2007: 935.
- 2) Lochs H, Allison SP, Meier R, Pirlich M, Kondrup J, Schneider S, et al. Introductory to the ESPEN Guidelines on Enteral Nutrition: terminology, definitions and general topics. Clin Nutr 2006;25:180-186.
- 3) Hubbard GP, Elia M, Holdoway A, Stratton RJ: A systematic review of compliance to oral nutritional supplements. Clin Nutr 2012, 31:293-312.