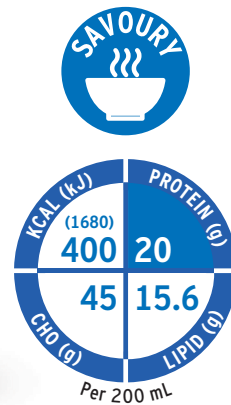




**FRESENIUS
KABI**

caring for life



Fresubin® 2 kcal Savoury DRINK

The minimum effective dose in one bottle

2 kcal/mL high protein oral nutritional supplement for the dietary management of patients with or at risk of malnutrition, in particular with increased energy and protein needs and/or fluid restrictions

Contains 400 kcal in one bottle, which is the minimum effective dose needed to improve patient outcomes^{1,2}

High protein content (20% energy = 20g/bottle) contributes to clinical, functional and nutritional benefits³

High Vitamin D content: 10 µg/200 mL For bone health and prevention of fractures and falls^{4,5}

Fibre free for patients who cannot tolerate fibre⁴

For Health Care Professionals only.

Fresubin

2 kcal Savoury DRINK

Available in two delicious flavours
in 200 mL EasyBottle



Nutritional Information

Average content	Fresubin 2 kcal Savoury DRINK	
	100 mL	bottle = 200 mL
Energy value	kJ (kcal)	840 (200) 1680 (400)
Fat (35% Energy)	g	7.8 15.6
of which SFA [*]	g	0.6 1.2
of which MUFA ^{**}	g	5.8 11.6
of which PUFA ^{***}	g	1.4 2.8
Carbohydrate (45% Energy)	g	22.5 45
of which sugars	g	1.2 2.4
of which lactose	g	≤ 0.3 ≤ 0.6
Fibre (1.5% Energy)	g	0 0
Protein (20% Energy)	g	10 20
Salt (Na x 2.5)	g	0.19 0.38
Water	mL	68.5 137
Lactose content	g	≤ 0.3 ≤ 0.6
Gluten Content	ppm	≤ 20
Osmolarity	mosmol/l	356-390
Osmolality	mosmol/kg H ₂ O	520-570
Minerals and trace elements		
Sodium	mg	75 150
Chloride	mg	80 160
Potassium	mg	160 320
Calcium	mg	205 410
Phosphorus	mg	120 240
Magnesium	mg	16 32
Iron	mg	2.5 5
Zinc	mg	1.6 3.2
Copper	µg	375 750
Iodine	µg	37.5 75
Selenium	µg	13.5 27
Manganese	mg	0.5 1
Chromium	µg	12.5 25
Molybdenum	µg	18.8 37.6
Fluoride	mg	0.25 0.5
Vitamins		
Vitamin A	µg RE ^o	212.5 425
of which β-Carotene	µg RE ^o	62.5 125
Vitamin D ₃	µg	5 10
Vitamin E	mg α-TE ^{oo}	3.75 7.5
Vitamin K ₁	µg	21 42
Vitamin C	mg	18.8 37.6
Thiamin (vitamin B ₁)	mg	0.3 0.6
Riboflavin (vitamin B ₂)	mg	0.4 0.8
Vitamin B ₆	mg	0.43 0.86
Niacin	mg/mg NE ^{ooo}	3.75/5.58 7.5/11.2
Folic Acid	µg	62.5 125
Vitamin B ₁₂	µg	0.75 1.5
Pantothenic Acid	mg	1.5 3
Biotin	µg	9.4 18.8

^{*}saturated fatty acids (SFA), ^{**}monounsaturated fatty acids (MUFA), ^{***}polyunsaturated fatty acids (PUFA)
^oretinol equivalents (RE), ^{oo}alpha-tocopherol equivalents (α-TE), ^{ooo}niacin equivalents (NE)

Prescribing Information

Food for special medical purposes:

Nutritionally complete, high-caloric (2.0 kcal/mL), high protein (20% energy) oral nutritional supplement, fibre free. High in vitamin D. Low in lactose and gluten. For the dietary management of patients with or at risk of disease-related malnutrition in particular for patients with increased energy and protein needs or fluid restrictions.

Dosage:

To be determined by a health care professional according to patients' needs. Recommendation for supplementary nutrition 1-2 bottles (400-800 kcal)/day or complete nutrition 4-5 bottles (1600-2000 kcal)/day.

Important notes:

To be used under medical supervision. Suitable as sole source of nutrition. Not suitable for children < 3 years. Use with caution in children < 6 years. Not suitable for patients with galactosaemia. Ensure adequate fluid intake.

Not for parenteral (I.V.) use!

Instruction for use:

Store at room temperature. Shake well before use. For hot consumption: to warm Fresubin 2 kcal Savoury DRINK, pour into a saucepan and warm up at low heat or pour the soup into a bowl and heat in the microwave at 600 watt for 90 seconds. Do not microwave the bottle. Do not boil the product. After heating stir well before use and use immediately. Once heated, do not re-heat. Usage without heating: Opened bottles may be stored in a refrigerator for up to 24 hours. Drink slowly! Best served chilled. Packaged in a protective atmosphere

Contraindications:

Not suitable whenever enteral nutrition is not permitted such as in acute gastrointestinal bleeding, ileus and shock. Use with caution in severe organ failure with impaired metabolism and severe forms of malabsorption. Not suitable for patients with congenital inability to metabolise nutrients contained in Fresubin 2 kcal Savoury DRINK.

Ingredients

Fresubin 2 kcal Savoury DRINK: Water, maltodextrin, milk protein, vegetable oils (sunflower oil, rapeseed oil), flavourings, potassium citrate, emulsifiers (E 471, soya lecithins), flavour enhancers (E 627, E 631)^a, Colours (E 150cⁱⁱ, E 160cⁱⁱ, E 160dⁱⁱ), potassium carbonate, acidity regulator (E 507), sodium chloride, vit. C, sodium sulphate, manganese chloride, niacin, iron pyrophosphate^a, zinc sulphate, manganese chloride, pantothenic acid, vit. E, copper sulphate, vit. B₂, vit. B₆, sodium fluoride, vit. B₁, β-carotene^a, vit. A^a, folic acid^a, chromium chloride, sodium molybdate, potassium iodide, sodium selenite, vit. K₁, biotin, vit. D₃, vit. B₁₂.

a) amount/position depending on flavour b) only present in flavour "Tomato-Carrot", c) only present in flavour "Mushroom"

Flavours

Mushroom, Tomato-Carrot

References

- Milne AC, Potter J, Vivanti A, Avenell A: Protein and energy supplementation in elderly people at risk from malnutrition. Cochrane.Database.Syst.Rev 2009, CD003288.
- Raynaud-Simon A, Revel-Delhom C, Hebuterne X: Clinical practice guidelines from the French High Authority for Health: nutritional support strategy in protein-energy malnutrition in the elderly. Clin Nutr 2011, 30: 312-319.
- Cawood AL, Elia M, Stratton RJ: Systematic review and meta-analysis of the effects of high-protein oral nutritional supplements. Ageing Res Rev 2012, 11: 278-296.
- Lochs H, Allison SP, Meier R, Pirlich M, Kondrup J, Schneider S, et al. Introductory to the ESPEN Guidelines on Enteral Nutrition: terminology, definitions and general topics. Clin Nutr 2006; 25: 180-6.
- Hubbard GP, Elia M, Holdoway A, Stratton RJ: A systematic review of compliance to oral nutritional supplements. Clin Nutr 2012, 31: 293-312.



**FRESENIUS
KABI**

caring for life

Fresenius Kabi Australia Pty Limited
Level 2, 2 Woodland Way,
Mount Kuring-gai NSW 2080
Phone 1300 732 001
Fax 1300 304 384
www.fresenius-kabi.com.au

Fresenius Kabi New Zealand Limited
60 Pavilion Drive, Māngere
Auckland 2022 New Zealand
Phone 0800 144 892
Fax +64 9925 2721
PM2019.657 Pub: October 2019