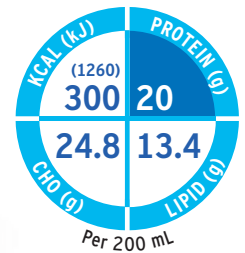




**FRESENIUS
KABI**

caring for life



Fresubin® Protein Energy DRINK

The Power of Protein

1.5 kcal/mL oral nutritional supplement for the dietary management of patients with or at risk of malnutrition, in particular with increased energy and protein needs and/or fluid restriction



High protein content contributes to clinical and functional benefits¹

With a variety of flavours to support compliance²

Fresubin® Protein Energy DRINK

Available in **three** delicious flavours
in 200 mL EasyBottle



Nutritional Information

Average content		100 mL	bottle = 200 mL
Energy value	kJ (kcal)	629 (150)	1258 (300)
Fat (40% Energy)	g	6.7	6.8
of which SFA*	g	0.6	1.2
of which MUFA**	g	5.0	10.1
of which PUFA**	g	1.1	2.2
of which cholesterol	mg	≤ 7	≤ 14
Carbohydrate (33% Energy)	g	12.4 ^{a,c} /12.1 ^b	24.8 ^{a,c} /24.2 ^b
of which sugars	g	7.4 ^a /5.4 ^b /6.7 ^c	14.8 ^a /10.8 ^b /13.4 ^c
of which lactose	g	≤ 0.6	≤ 1.2
Fibre (0.7% Energy)^b	g	0 ^{a,c} /0.5 ^b	0 ^{a,c} /0.10 ^b
Protein (27% Energy)	g	10	20
Water	mL	76	152
Osmolarity	mosmol/L	435 ^{a,c} /410 ^b	
Osmolality	mosmol/kg H ₂ O	570 ^{a,c} /540 ^b	
Minerals and trace elements			
Sodium	mg	49 ^{a,c} /50 ^b	98 ^{a,c} /100 ^b
Potassium	mg	130 ^{a,c} /140 ^b	260 ^{a,c} /280 ^b
Chloride	mg	55 ^{a,c} /50 ^b	110 ^{a,c} /100 ^b
Calcium	mg	205 ^{a,c} /195 ^b	410 ^{a,c} /390 ^b
Magnesium	mg	26 ^{a,c} /18 ^b	52 ^{a,c} /36 ^b
Phosphorus	mg	120	240
Iron	mg	2.5	5.0
Zinc	mg	2.0	4.0
Copper	mg	0.375	0.750
Manganese	mg	0.5	1.0
Iodine	µg	37.5	75
Fluoride	mg	0.25	0.50
Chromium	µg	12.5	25
Molybdenum	µg	18.8	37.6
Selenium	µg	13.5	27
Vitamins			
Vitamin A	µg RE ^o	213	426
of which β-Carotene	µg RE ^o	63	126
Vitamin D ₃	µg	2.5	5.0
Vitamin E	mg α-TE ^{oo}	3.75	7.5
Vitamin K ₁	µg	21	42
Thiamin (vitamin B ₁)	mg	0.3	0.6
Riboflavin (vitamin B ₂)	mg	0.4	0.8
Niacin	mg	1.5	3.0
Vitamin B ₆	mg	0.46	0.92
Vitamin B ₁₂	µg	1.0	2.0
Pantothenic acid	mg	1.5	3.0
Biotin	µg	9.4	18.8
Folic acid	µg	69.0	138
Vitamin C	mg	18.8	37.6

*saturated fatty acids (SFA), **monounsaturated fatty acids (MUFA),
***polyunsaturated fatty acids (PUFA)
^aVanilla ^bChocolate ^cCappuccino
^oRE: retinol equivalents; ^{oo}α-TE: alpha-tocopherol equivalents.

General Information

Food for special medical purposes:

Nutritionally complete, fibre-free*, high caloric (1.5 kcal/mL), high protein (20 g/bottle) oral nutritional supplement. For the dietary management of patients with or at risk of malnutrition in particular with increased protein and energy needs and/or fluid restriction.

Dosage:

To be determined by a healthcare professional according to patients' needs. Recommendation for supplementary nutrition, 2-3 bottles (600-900 kcal)/day or complete nutrition, 4-5 bottles (1200-1500 kcal)/day.

Important notice:

To be used under medical supervision. If used for complete nutrition consider high protein level. Not suitable for children <3 years. Use with caution in children <6 years. Not suitable for patients with galactosaemia. Ensure adequate fluid and electrolyte intake.

Not for parenteral (I.V.) use!

Instruction for use:
Best served chilled. Shake well before use. Store at room temperature. Opened bottles may be stored in a refrigerator for up to 24 hours.

Additional considerations:

Not suitable whenever enteral nutrition is not permitted such as in acute gastrointestinal bleeding, ileus and shock. Use with caution in severe organ failure with impaired metabolism and severe forms of malabsorption. Not suitable for patients with congenital inability to metabolise nutrients contained in Fresubin Protein Energy DRINK**.

^aFlavour Chocolate contains traces of fibre from cocoa powder

^a^aFlavour Cappuccino contains traces of caffeine (0.65 mg/100 mL)

Ingredients

Fresubin Protein Energy DRINK Vanilla: Water, milk proteins, sugar, vegetable oils (high-oleic sunflower oil, rapeseed oil), maltodextrin, potassium citrate, flavouring, sodium chloride, sodium citrate, emulsifier (soya lecithins), vitamin C, magnesium oxide, ferric diphosphate, magnesium citrate, zinc sulphate, pantothenic acid, manganese chloride, niacin, vitamin E, cupric sulphate, riboflavin, vitamin B₆, sodium fluoride, thiamine, beta-carotene, vitamin A, folic acid, chromium chloride, potassium iodide, sodium molybdate, sodium selenite, vitamin K, biotin, vitamin D, vitamin B₁₂.

Allergen Information: Contains milk and soy. Low lactose and gluten free.

Halal & Kosher certified.

Product ingredients for one flavour only. Detailed ingredient lists of the other flavours can be requested from ensupport-anz@fresenius-kabi.com

Flavours

Vanilla, Chocolate, Cappuccino.

References

1. World Health Organization. Protein and amino acid requirements in human nutrition. WHO technical report series 2007; 935. 2. Hubbard GP, Elia M, Holdaway A, Stratton RJ: A systematic review of compliance to oral nutritional supplements. Clin Nutr 2012, 31:293-312. 3. National Health and Medical Research Council: Nutrient Reference Values Australia and New Zealand. <https://www.eat-forhealth.gov.au/nutrient-reference-values>. Accessed May, 2023.