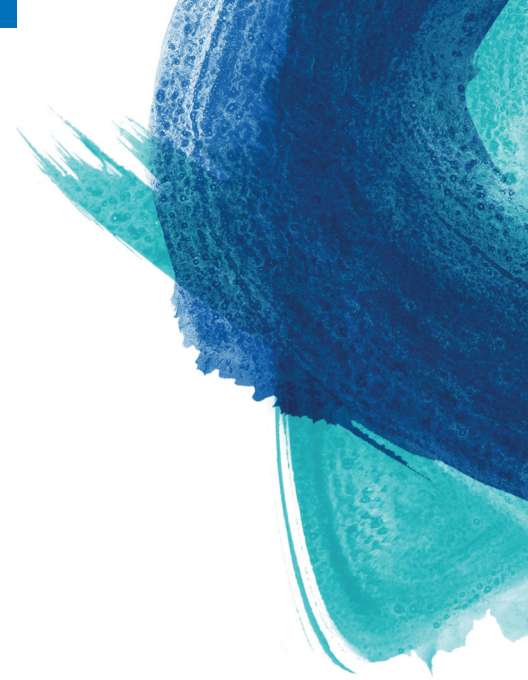




**FRESENIUS
KABI**

caring for life



Thick&Easy™ Clear

A clear solution for safe swallowing

Instant food and beverage thickener, gum based, used for the dietary management of patients with dysphagia.

Clear results to support patient compliance:
For thickening in the most appetizing way as food and beverages retain their original taste

Amylase resistant for stable consistency over time to ensure safe swallowing'

Gives smooth consistency for enjoyable mouthfeel

For Healthcare Professionals only.

