

Enhancing Patient Safety. Elevating standards with an improved placement method

Advantages



Combines the benefits of two procedures

The technique combines the advantages of a conventional PEG placement using the pull method with the benefits of a secure adaptation of gastric wall and abdominal wall, independent of PEG fixation.

-85%

Reduces complications significantly

Gastropexy lowers PEG complications by up to 85%, safeguarding the stoma and preventing peritoneal gastric juice infiltration, thus reducing infection risks.^{1,3}



Enhanced stoma healing

Unlike traditional PEG, after gastropexy, the outer PEG plate can be loosely fixed against the abdominal wall¹. Thus, a better blood circulation around the stoma enhances stoma healing and early tube mobilization prevents from buried bumper syndrome.⁴





Protects vulnerable patients

This procedure offers improved protection for PEG patients. This can be particularly beneficial for those with health impairments such as cachexia, wound healing disorders and diabetes.

“ **The data ... show ... that the direct puncture procedure lead to a significant reduction in complications, especially major complications, ...** ”

(Kishta J, Reich V, Bojarski C. Hybrid-PEG – Erfahrungen nach über 300 Hybrid-PEGs an der Charité. Endo-Praxis 2021; 37: 95-99 – article in German)

Ordering information

	FR size	Packaging	Art.No.
 Freka PEG Pro Hybrid Set, FR 16 Freka PEG Pro Fr 16 + Gastropexy Device II		1 x 1	M90800501
 Freka PEG Hybrid Set, FR 15 Freka PEG FR 15 + Gastropexy Device II		1 x 1	M90800500
Accessories			
Freka® Repair Sets for Freka® PEG Pro, ENFit	FR 16	1 x 1	M90800402
Freka® Repair Sets for Freka® PEG, ENFit	FR 15	1 x 1	7981383
Dressing Set acc. to Hermann		1 x 1	7901081
Erlanger Dressing Set		1 x 1	7981941
Enteral Dispensing Systems, ENFit			
Freka Connect ENFit/ProNeo	20 ml	100 x 1	9000785
	20 ml	30 x 1	9000785S
	20 ml	10 x 1	9000785XS
	60 ml	50 x 1	9000786
	60 ml	30 x 1	9000786S
	60 ml	10 x 1	9000786XS
	100 ml	30 x 1	9000787
	100 ml	10 x 1	9000787XS

References

- 1 Kishta J, Reich V, Bojarski C. Hybrid-PEG – Erfahrungen nach über 300 Hybrid-PEGs an der Charité. Endo-Praxis 2021; 37: 95-99
- 2 Reich V. Retrospektive Dual-Center-Studie zum Vergleich der PEG-Punktion durch das Assistenzpersonal vs. Punktion durch ärztliches Personal. Promotionsarbeit eingereicht 11/2020. Berlin: Charité - Universitätsmedizin; 2021
- 3 Leonie Schumacher, Christian Bojarski et. al, Complication rates of direct puncture and pull-through techniques for percutaneous endoscopic gastrostomy - Results from a large multicenter cohort, DOI: 10.1055/a-1924-3525, 08/2022
- 4 Devia J, Santivañez JJ, Rodríguez M, Rojas S, Cadena M, Vergara A. Early Recognition and Diagnosis of Buried Bumper Syndrome: A Report of Three Cases. Surg J (N Y). 2019 Aug 22;5(3):e76-e81. doi: 10.1055/s-0039-1692148. PMID: 31448333; PMCID: PMC6706275.



**FRESENIUS
KABI**
caring for life

Fresenius Kabi AG
Else-Kröner-Straße 1
61352 Bad Homburg v.d.H. Germany
Phone: +49 (0) 6172 686-0
www.fresenius-kabi.com

**FRESENIUS
KABI**
caring for life

Freka® Hybrid Set

A remarkable synergy between two enteral placement methods



Freka PEG with
Gastropexy

© Fresenius Kabi Deutschland GmbH. Reproduction and distribution - only with prior written authorisation.

(0923/AC)

Freka® PEG Hybrid Set

The choice of long-term enteral nutrition (>4 weeks) with a PEG* and a preceding gastropexy

The PEG* placement is a game changer for patients with long lasting swallowing disorders. For vulnerable patient it is crucial to reduce stoma complications.

Transforming Patient Safety with a new approach

The Freka PEG Hybrid Set is a treatment kit designed to provide an enhanced therapeutic solution for PEG* placement. It consists of two components: the Freka PEG Pro or Freka PEG and the gastropexy device.

This new placement method ensures stable fixation by suturing the gastric wall to the abdominal wall using gastropexy prior to performing a classic PEG placement.

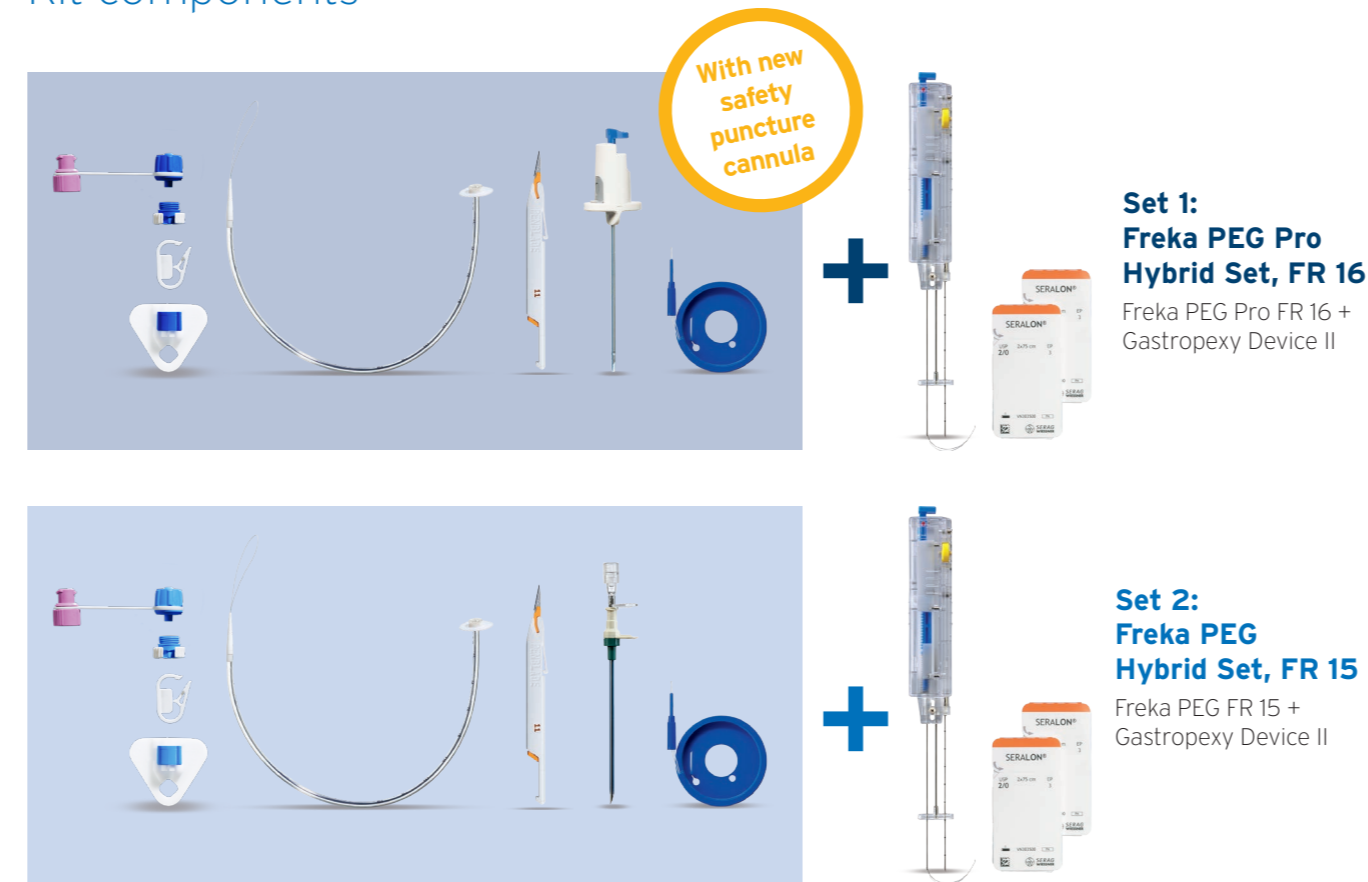
The combination of both techniques significantly reduces risks such as pneumoperitoneum and peritonitis. Initial clinical data show a significant reduction in complications.^{1,2,3}



Find out more under www.enteral-nutrition.com

*PEG = Percutaneous Endoscopic Gastrostomy

Kit components



Convincing results for better patient protection

Placement of Freka PEG Hybrid in steps*

The Freka PEG Hybrid is a combination of a Freka PEG or Freka PEG Pro with a gastropexy. Both procedures are applied one after the other.

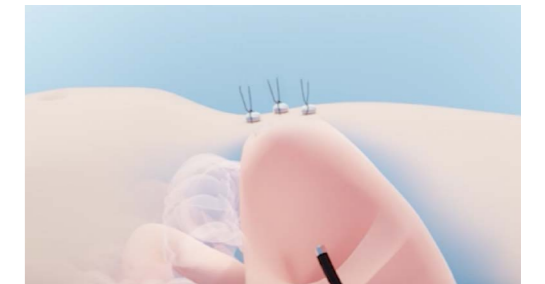
1. Before start

The patient must be prepared for PEG placement and the endoscope inserted. Then the right puncture site is selected by transillumination.



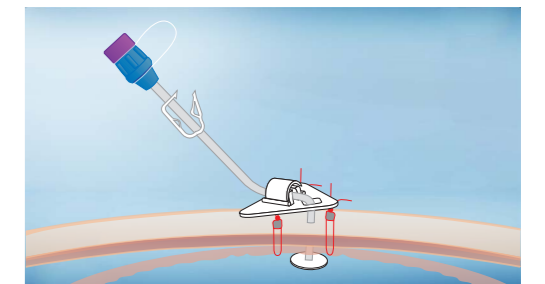
2. Perform the gastropexy with the Gastropexy device II

The gastropexy can now be performed with the gastropexy device. With this method, the stomach wall is sewn to the abdominal wall, thus ensuring secure fixation. The sutures are padded with small cotton balls. This process should be repeated 3-4 times so that there is a free apposition area of 2 cm² in the middle.



3. Perform the PEG placement by pull method with the Freka PEG Pro or Freka PEG set

The resulting area of apposition defines the puncture site for the PEG. The Freka PEG Pro FR 16 or the Freka PEG FR 15 is now performed using the classic pull method. The subsequent fixation of the external retention plate takes place without the otherwise required tensile force of approx. 2N.



4. Aftercare

The aftercare is the same as that of the PEG. The gastropexy threads are removed after the stoma has healed.

* please refer always to the Instruction for use